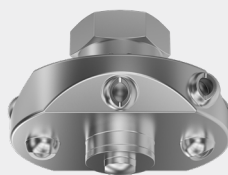


Rotating cleaning nozzle Gyro Series 577

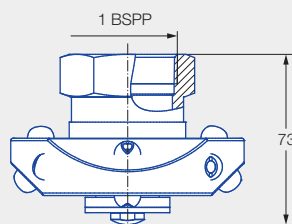


Features:

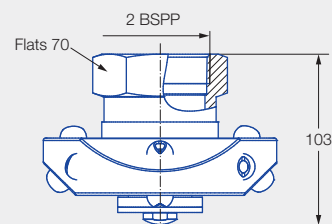
- Cleaning with powerful nozzle inserts
- Suitable for very large tanks
- Available with many different flow rates
- Clogging-resistant and large clear cross-sections



Series 577



Female thread



Female thread

Max. tank diameter [m]	0	1	2	3	4	5	6	7	8	9
------------------------	---	---	---	---	---	---	---	---	---	---



Cleaning efficiency class
3



Max. temperature
95 °C



Installation
Vertically facing downwards



Bearing
Slide bearing made of PTFE



Material
Stainless steel 316L,
PTFE

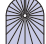


Recommended operating pressure
3 bar



Filtration
Line strainer with a mesh size of 0.3 mm/50 mesh



Spray angle	Ordering no.			V̇ water [l/min]					Max. tank diameter [m]
	Type	Code		p [bar] (p _{max} = 5 bar)					
		1 BSPP	2 BSPP					at 40 psi [US gal/min]	
				1.0	2.0	3.0	5.0		
<div>360°</div> <div></div>	577.289.1Y	AN		115	163	200	258	50	3.4
	577.369.1Y	AN		182	258	316	408	80	3.9
	577.409.1Y		AW	228	322	394	509	100	4.2
	577.439.1Y		AW	273	386	473	610	120	4.6
	577.499.1Y		AW	380	538	659	851	170	5.4

NPT thread available on request.

The maximum tank diameter applies to the recommended operating pressure and is meant as a recommendation only.
The cleaning result is also affected by the type of soiling.

Compressed air should be used for dry blowing for a short time only. Operation above the recommended operating pressure has a negative impact on the cleaning result and wear.

Ordering example: 577.289.1Y + AN = 577.289.1Y.AN



